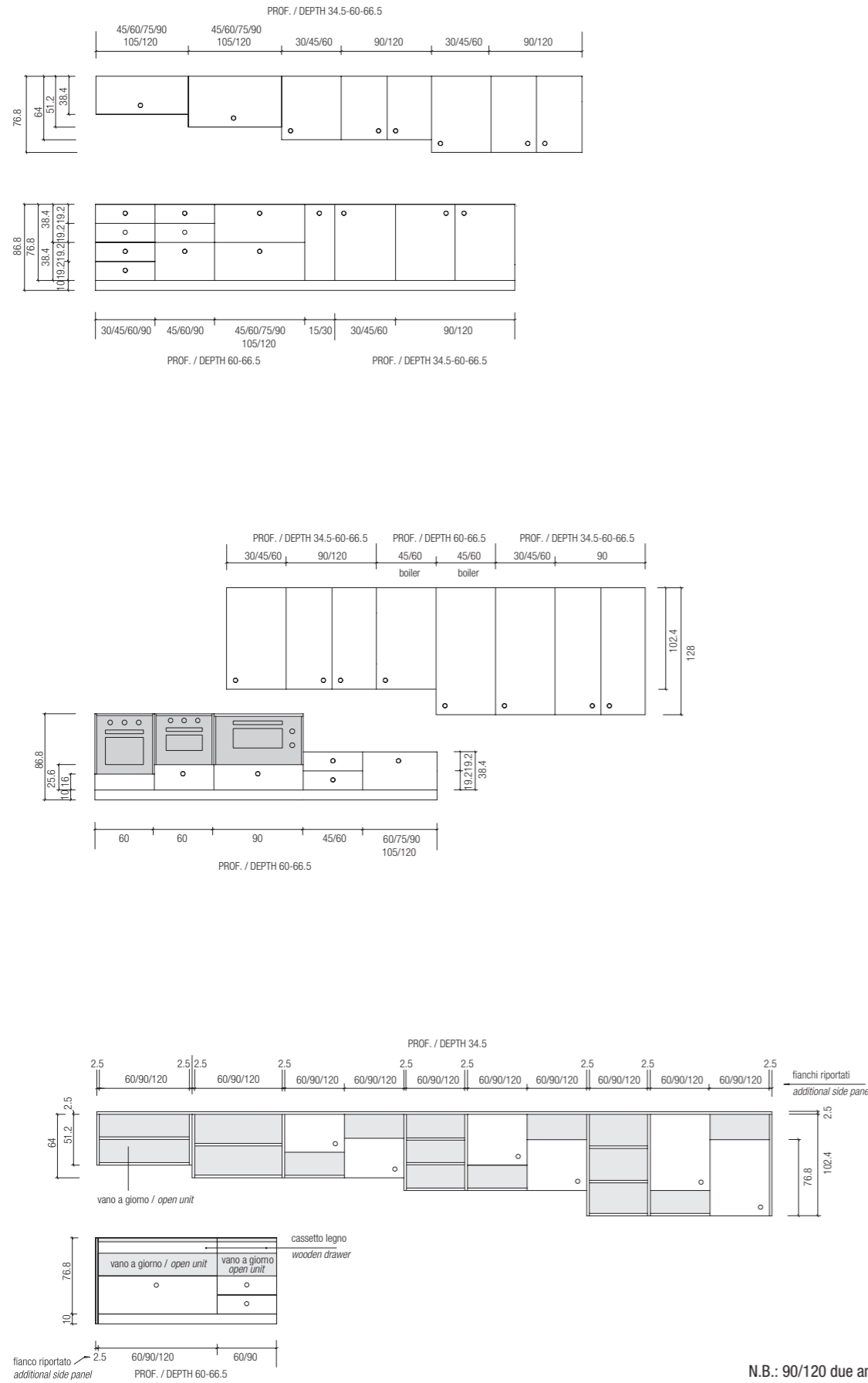
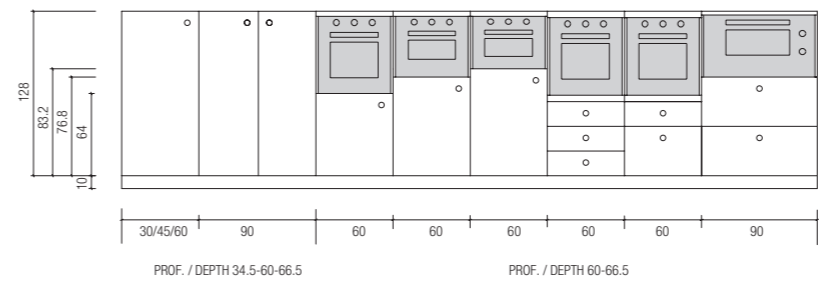


Modulistica basi e pensili (cm)
Base and wall units size range (cm)



N.B.: 90/120 due ante / 90/120 two doors

Modulistica colonne h 138 cm
Tall units 138 cm high size range



Modulistica colonne h 214.8 cm
Tall units 214.8 cm high size range



One Handle

Ante, spessore 22 mm, in MDF idrorepellente per le finiture laccate o in fibra di legno idrorepellente per le altre finiture.

- B** Laminato HPL Unicolor
- C** Laccato opaco
- C** Fenix NTM®
- D** Laccato lucido
- D** Laccato effetto metallo
- D** Legno disponibile nelle finiture
 - Rovere naturale
 - Noce canaletto
 - Rovere scuro termotrattato

Attenzione
Impiallacciatura verticale non continua.

Pensili serie Trim

Ante, spessore 22 mm, costituite da un telaio larghezza 22 mm in alluminio anodizzato naturale, con vetro temperato satinato extrachiaro. Apertura a mezzo profilo gola in alluminio sotto pensile o push pull. **Non sono ammesse riduzioni.**

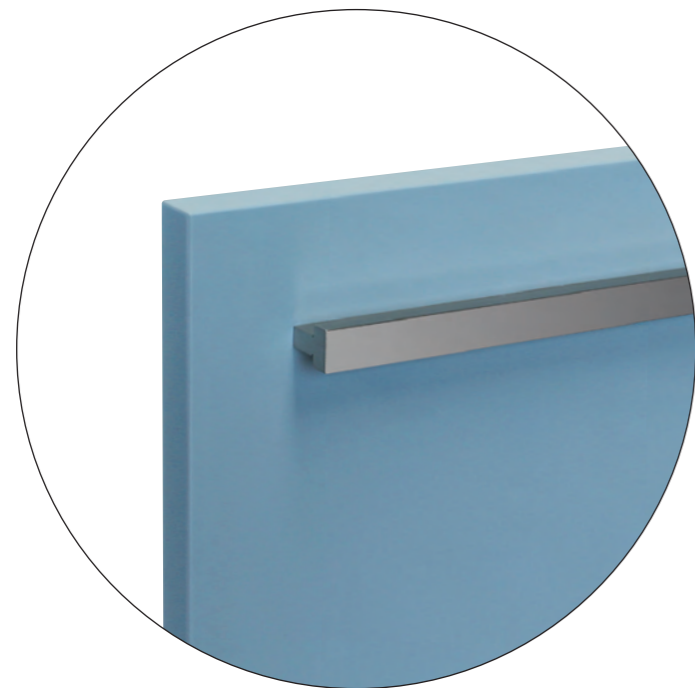
Doors, 22 mm thick, in water-repellent MDF (in lacquered finishes) or in water-repellent wood fibre panels (in the other finishes).

- B** Unicolor HPL laminate
- C** Mat lacquered
- C** Fenix NTM®
- D** Shiny lacquered
- D** Lacquered metal effect
- D** Wood available in the following finishes
 - Natural oak
 - American walnut
 - Smoked dark oak

Attention
Not continuous vertical veneer.

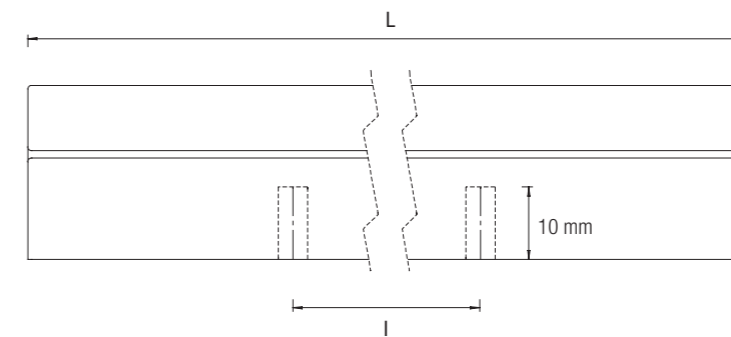
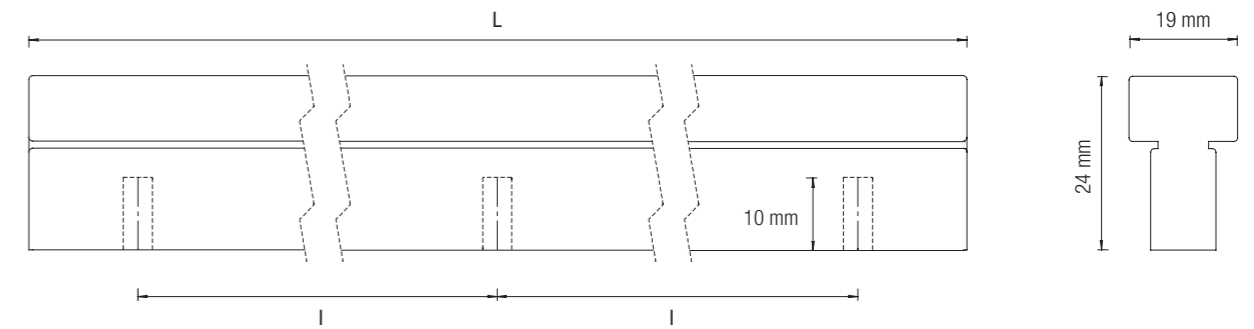
Wall units serie Trim

The doors, 22 mm thick, have a natural anodized aluminium frame, 22 mm wide, and mat extraclear tempered glass. Aluminium ogee profile opening on the bottom or push pull. **No size alteration can be made to these doors.**

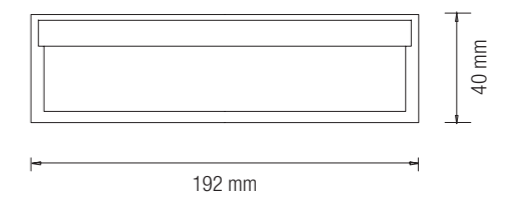
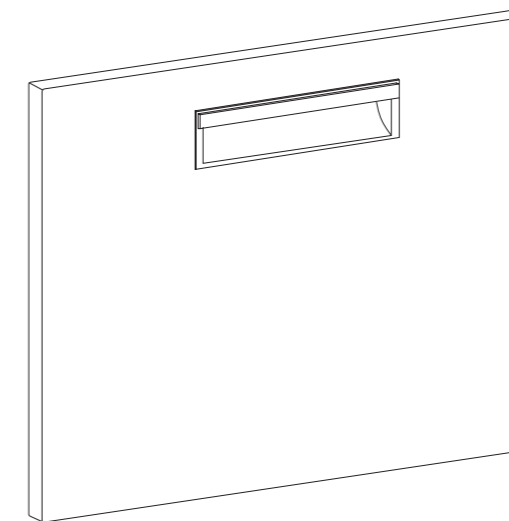


One Handle

Particolare maniglia / Handle detail



Larghezza mobile Unit width (mm)	L (mm)	I (mm)	n° fori nr. of drills
300	209	192	2
450	359	192	2
600	509	320	2
750	659	320	2
900	809	320	3
1050	959	320	3
1200	1109	320	3
1350	1259	416	3
1500	1409	416	3
frigo anta intera fridge full door	1877	640	3
frigo anta 768 fridge door 768	659	320	2
frigo anta 1280 fridge door 1280	1109	320	3



Maniglia incassata in alluminio naturale (disponibile solo su richiesta) / Built-in handle in natural aluminium (available on request)

ante e finiture / doors and finishes

laccati opachi (C2) o lucidi (S2) / mat (C2) or shiny (S2) lacquered finishes



Bianco
White

Avorio chiaro
Light ivory

Beige chiaro
Light beige

Grigio ghiaia
Grey gravel

Grigio pietra
Stone grey

Grigio antracite
Anthracite grey

Giallo
Yellow



Arancio
Orange

Rosso Schiffini
Red Schiffini

Rosso Cina
Red Cina

Rosso Bugatti
Red Bugatti

Caffè
Coffee

Celeste
Light blue

Blu Lancia
Blue Lancia



Viola
Purple

Senape
Mustard

Nero
Black

laccati opachi (C2) o lucidi (S2) e Fenix NTM® / mat (C2) or shiny (S2) lacquered finishes and Fenix NTM®



Bianco Malè
Malè white

Bianco Kos
Kos white

Beige Luxor
Luxor beige

Beige Arizona
Arizona beige

Rosa Colorado
Colorado pink

Cacao Orinoco
Orinoco cacao

Rosso Jaipur
Jaipur red



Castoro Ottawa
Ottawa beaver

Grigio Efeso
Efeso grey

Grigio Antrim
Antrim grey

Grigio Bromo
Bromine grey

Grigio Londra
London grey

Verde Comodoro
Comodoro green

Blu Fes
Fes blue



Nero Ingo
Ingo black

laccati effetto metallo / lacquered metal effect



Rame
Copper

Titanio C2
Titanium C2

Silver C2
Silver C2

laminati HPL Unicolor / Unicolor HPL laminate



Bianco 136 U
White 136 U

Avorio 101 U
Ivory 101 U

Sabbia 103 U
Sand 103 U

Grigio 104 U
Grey 104 U

Rosso 105 U
Red 105 U

Antracite 107 U
Anthracite 107 U

Nero 109 U
Black 109 U

legni / woods

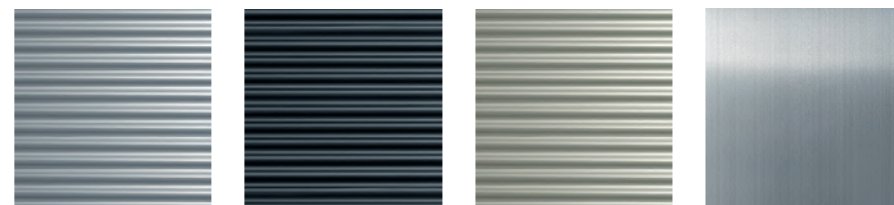


Rovere naturale
Natural oak

Noce canaletto
American walnut

Rovere scuro termotrattato
Smoked dark oak

metalli / metals



Alluminio
anodizzato naturale
Natural anodized
aluminium

Alluminio
anodizzato nero
Black anodized
aluminium

Alluminio
anodizzato titanio
Titanium anodized
aluminium

Inox satinato
Satin finish ssteel

scafi / carcasses

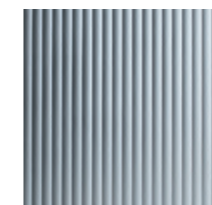
melamina / melamine



Grigio Antracite
Anthracite grey

Nero con bordo rovere (solo Lepic)
Black with oak edges (Lepic only)

ALSystem / ALSystem



Alluminio naturale
Natural aluminium

piani di lavoro / worktops

legni / woods

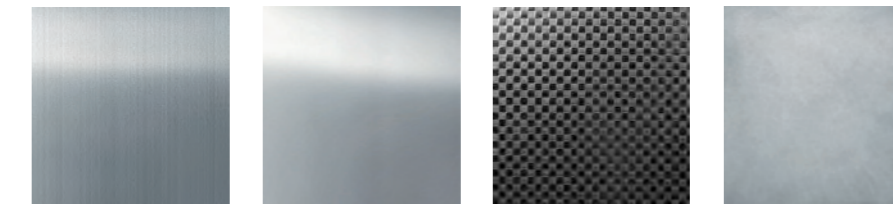


Rovere naturale
Natural oak

Noce canaletto
American walnut

Rovere scuro termotrattato
Smoked dark oak

metalli / metals



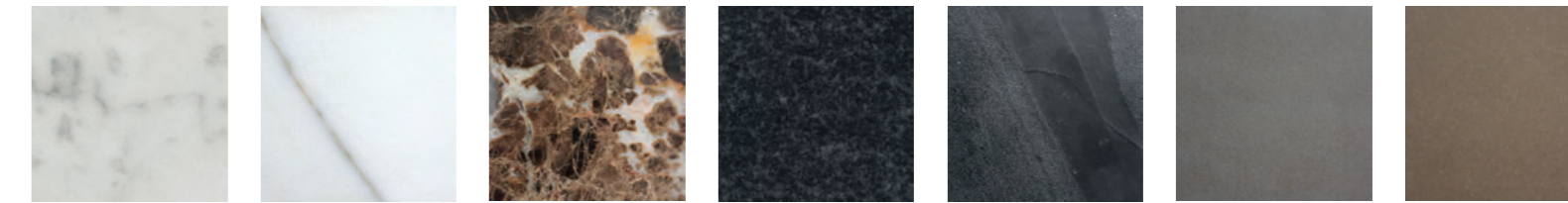
Inox satinato
Satin finish ssteel

Inox lucido
Shiny finish ssteel

Inox antigraffio (top)
Anti scratch ssteel (top)

Inox soft
Soft ssteel

pietre naturali / natural stones



Marmo bianco Carrara
White Carrara marble

Calacatta Caldia
Calacatta Caldia

Emperador Dark
Emperador Dark

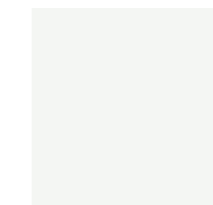
Granito nero assoluto
Absolute black granite

Ocean Black
Ocean Black

Quarzite grigia
Grey quartzite

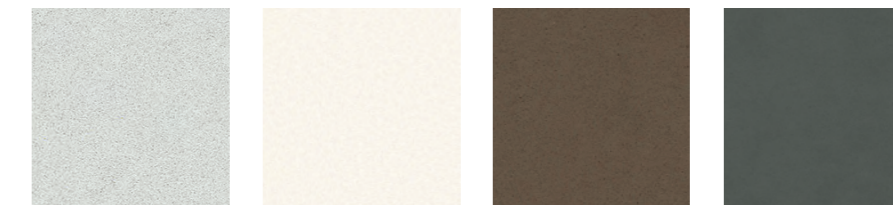
Quarzite beige
Beige quartzite

Corian®



Bianco
White

Silestone®



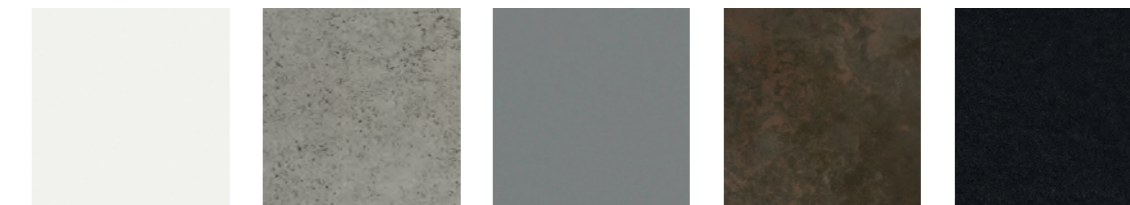
Bianco Norte
Norte white

Bianco Zeus
Zeus white

Unsui
Unsui

Cemento
Cemento

Dekton®



Zenith
Zenith

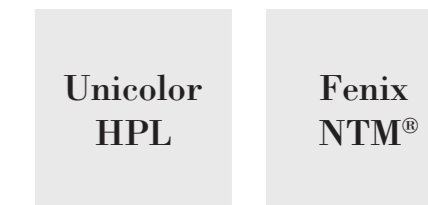
Keon
Keon

Korus
Korus

Keranium
Keranium

Domoos
Domoos

altri / other



Disponibili nelle stesse finiture delle ante
Available in the same finishes of doors