

Ante, spessore 20 mm, in acciaio inox scotch-brite™ (satinatura verticale) e struttura interna con espanso. Rivestimento sul retro in alluminio finitura acciaio.

Scotch-brite™ stainless steel doors (vertical brush) 20 mm thick and internal structure in foamed polyurethane. Rear surface lined with aluminium finished in s-steel.

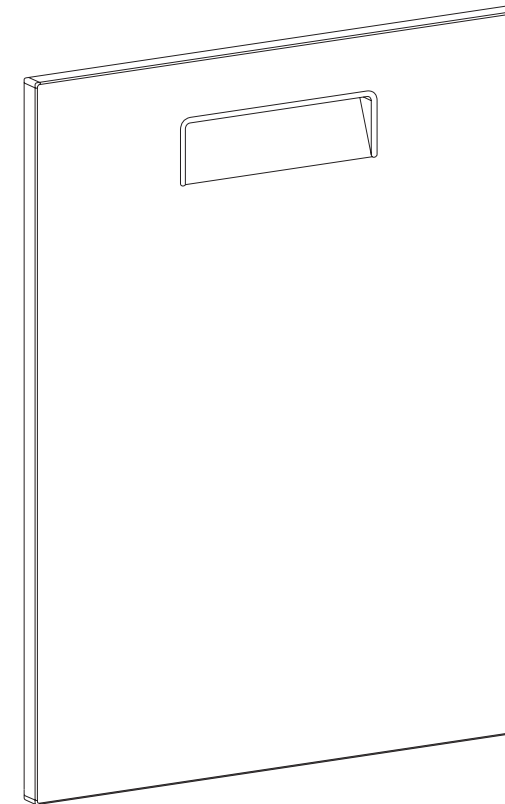
M Inox satinato

M *Satin s/steel*

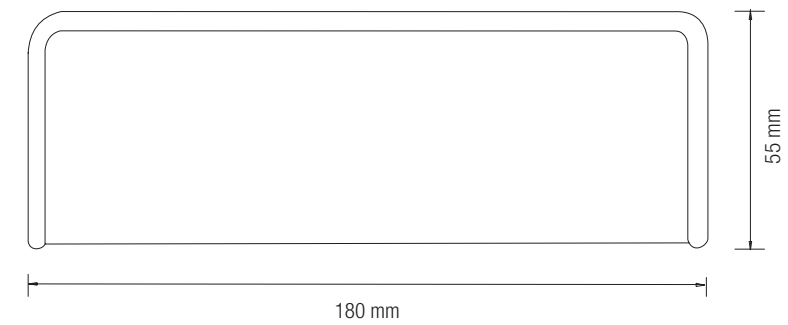
Tutte le ante sono con maniglia (a richiesta senza maniglia).

All doors have handles (without handle on request).

Particolare anta / Door detail



Particolare maniglia / Handle detail



ante e finiture / doors and finishes

laccati opachi (C2) o lucidi (S2) / mat (C2) or shiny (S2) lacquered finishes



Bianco White
Avorio chiaro Light ivory
Beige chiaro Light beige
Grigio ghiaia Grey gravel
Grigio pietra Stone grey
Grigio antracite Anthracite grey
Giallo Yellow



Arancio Orange
Rosso Schiffini Red Schiffini
Rosso Cina Red Cina
Rosso Bugatti Red Bugatti
Caffè Coffee
Celeste Light blue
Blu Lancia Blue Lancia



Viola Purple
Senape Mustard
Nero Black

laccati opachi (C2) o lucidi (S2) e Fenix NTM® / mat (C2) or shiny (S2) lacquered finishes and Fenix NTM®



Bianco Malè Malè white
Bianco Kos Kos white
Beige Luxor Luxor beige
Beige Arizona Arizona beige
Rosa Colorado Colorado pink
Cacao Orinoco Orinoco cacao
Rosso Jaipur Jaipur red



Castoro Ottawa Ottawa beaver
Grigio Efeso Efeso grey
Grigio Antrim Antrim grey
Grigio Bromo Bromine grey
Grigio Londra London grey
Verde Comodoro Comodoro green
Blu Fes Fes blue



Nero Ingo Ingo black

laccati effetto metallo / lacquered metal effect



Rame Copper
Titanio C2 Titanium C2
Silver C2 Silver C2

laminati HPL Unicolor / Unicolor HPL laminate



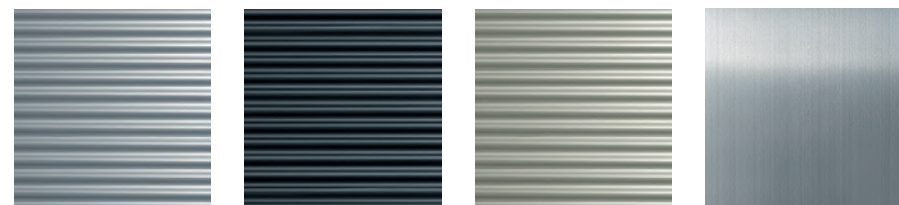
Bianco 136 U White 136 U
Avorio 101 U Ivory 101 U
Sabbia 103 U Sand 103 U
Grigio 104 U Grey 104 U
Rosso 105 U Red 105 U
Antracite 107 U Anthracite 107 U
Nero 109 U Black 109 U

legni / woods



Rovere naturale Natural oak
Noce canaletto American walnut
Rovere scuro termotrattato Smoked dark oak

metalli / metals



Alluminio anodizzato naturale Natural anodized aluminium
Alluminio anodizzato nero Black anodized aluminium
Alluminio anodizzato titanio Titanium anodized aluminium
Inox satinato Satin finish ssteel

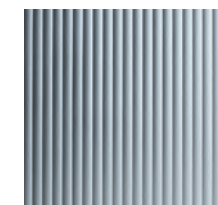
scafi / carcasses

melamina / melamine



Grigio Antracite Anthracite grey
Nero con bordo rovere (solo Lepic) Black with oak edges (Lepic only)

ALSystem / ALSystem



Alluminio naturale Natural aluminium

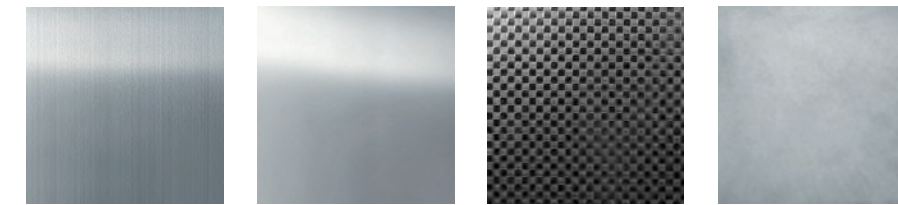
piani di lavoro / worktops

legni / woods



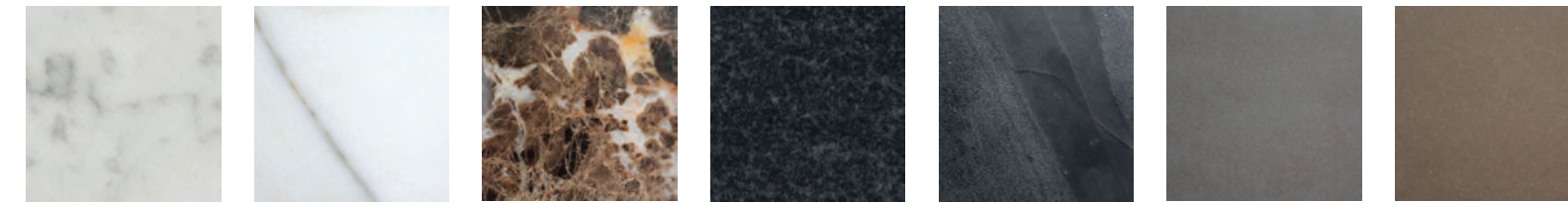
Rovere naturale Natural oak
Noce canaletto American walnut
Rovere scuro termotrattato Smoked dark oak

metalli / metals



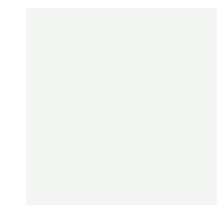
Inox satinato Satin finish ssteel
Inox lucido Shiny finish ssteel
Inox antigraffio (top) Anti scratch ssteel (top)
Inox soft Soft ssteel

pietre naturali / natural stones



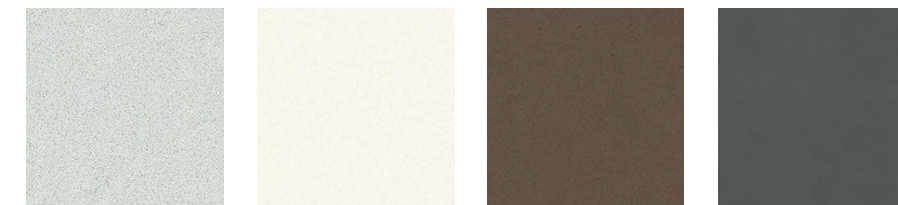
Marmo bianco Carrara White Carrara marble
Calacatta Caldia Calacatta Caldia
Emperador Dark Emperador Dark
Granito nero assoluto Absolute black granite
Ocean Black Ocean Black
Quarzite grigia Grey quartzite
Quarzite beige Beige quartzite

Corian®



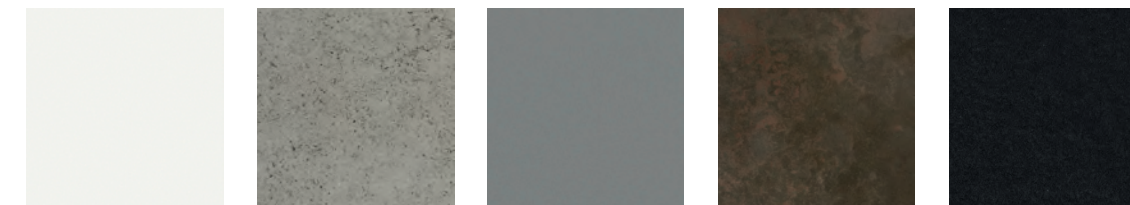
Bianco White

Silestone®



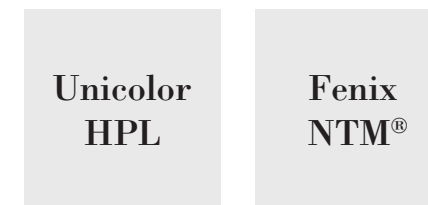
Bianco Norte Norte white
Bianco Zeus Zeus white
Unsui Unsui
Cemento Cemento

Dekton®



Zenith Zenith
Keon Keon
Korus Korus
Keranium Keranium
Domoos Domoos

altri / other



Disponibili nelle stesse finiture delle ante
Available in the same finishes of doors